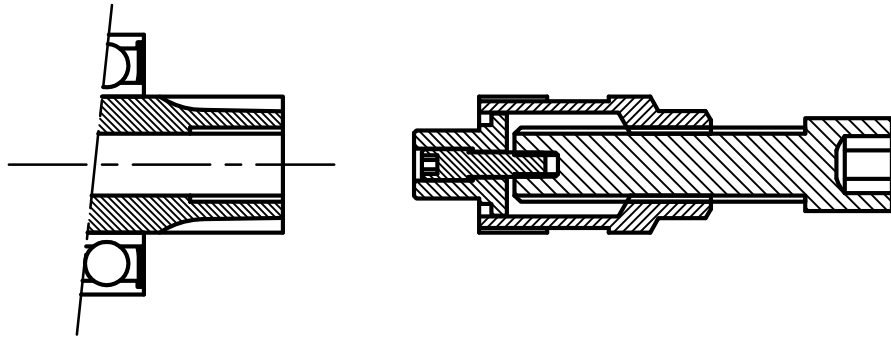


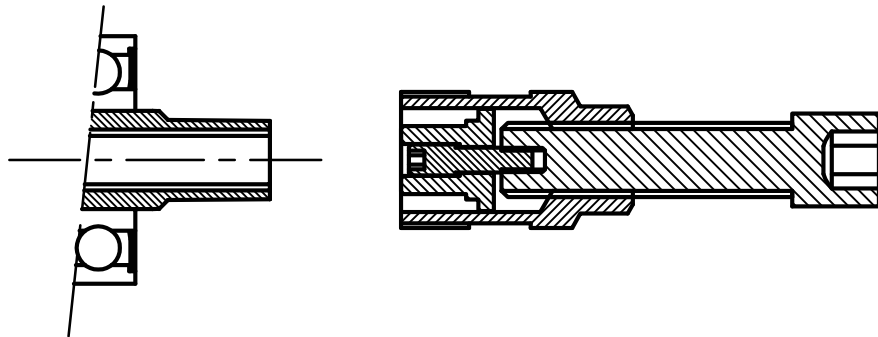
Unicycle.com

This crank extractor can be used with the majority the modern crank fittings without modification or additional parts. Before installing in the crank the extractor needs to be setup as shown.

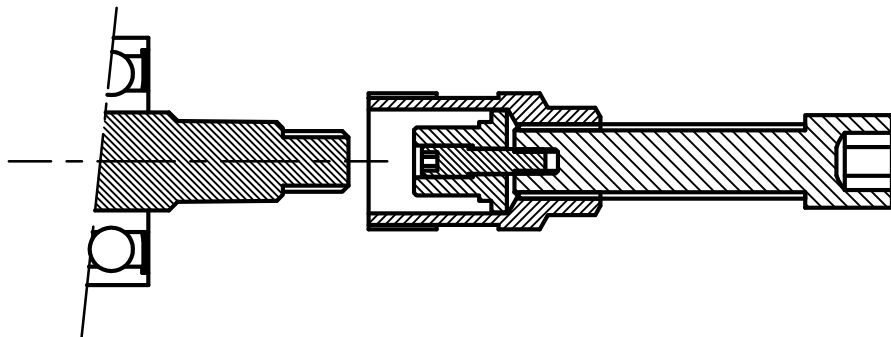
ISIS
Interface



Cotterless
Interface
(with bolt)



Cotterless
Interface
(with nut)



How to Use a Crank Extractor

1. Remove crank dust cap from the center of crank (if fitted).
2. Remove the nut/bolt using a 14mm wrench or 8mm allen key. (counter-clockwise)
3. Screw the extractor outer section clockwise into the crank arm fully and tighten gently with a wrench.
4. Use 8mm allen key to screw the central shaft clockwise. This will push the crank off the end of the axle. Often a lot of force is needed due to the press fit.
5. When the crank is loose unscrew the outer threaded section to separate it from the crank.

Always wear safety goggles while operating heavy equipment.